

# PRIZED PARK AVENUE TROPHY

## 710 PARK AVENUE - APARTMENT 2C



CAROL E. LEVY  
REAL ESTATE

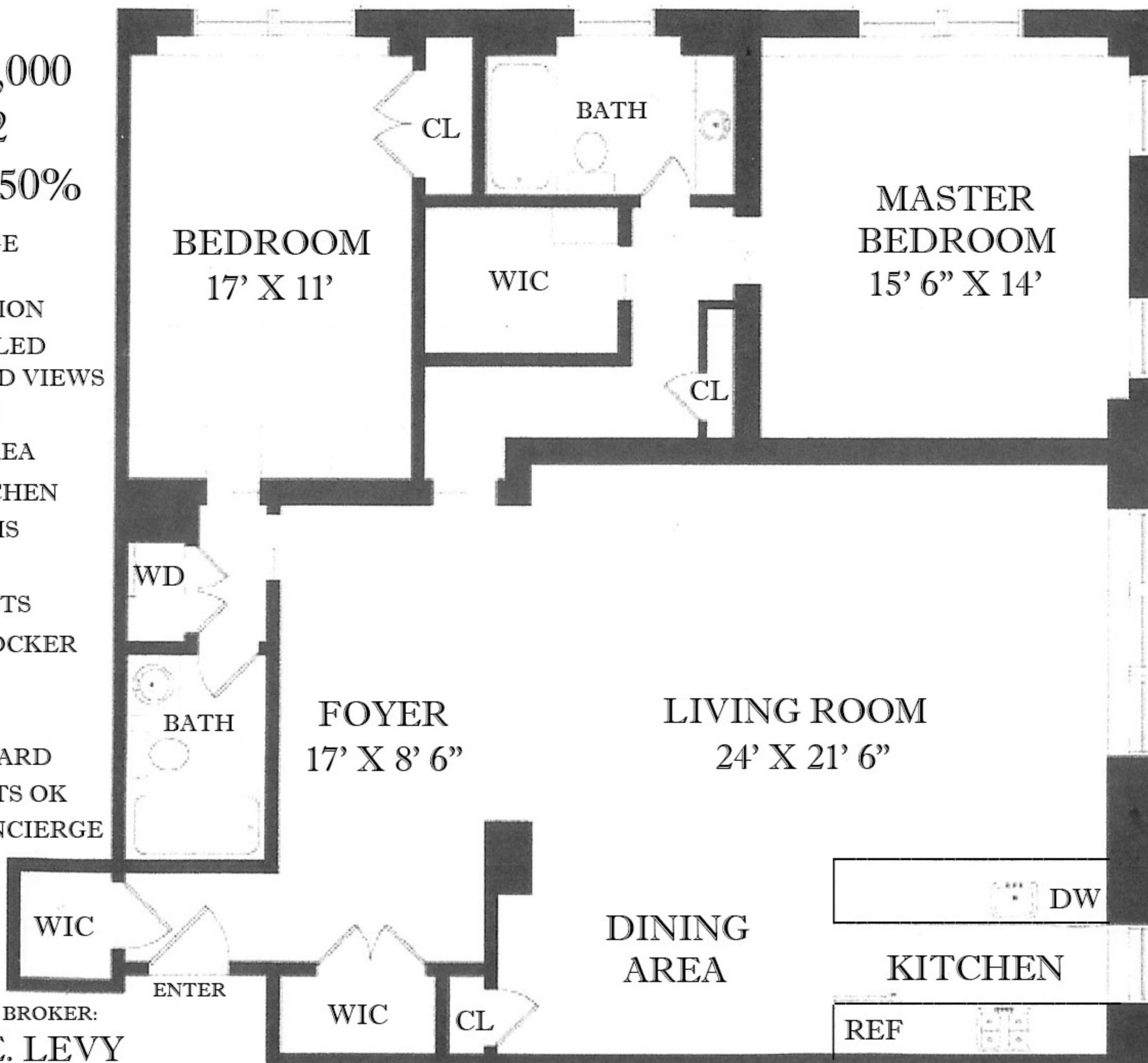
# 710 PARK AVENUE - APARTMENT 2C

PRICE: \$2,495,000

MAINT: \$3,302

FINANCING: 50%

- BREATHTAKING, HUGE CORNER LAYOUT
- EXQUISITE RENOVATION
- WONDERFUL SUNFILLED PARK AVE TREE-LINED VIEWS
- GRAND LIVING ROOM
- SEPARATE DINING AREA
- EXQUISITE NEW KITCHEN
- STUNNING NEW BATHS
- WASHER/DRYER
- TREMENDOUS CLOSETS
- PRIVATE STORAGE LOCKER
- FITNESS CENTER
- WINE CELLAR
- LAUNDRY & COURTYARD
- PIED-A-TERRES & PETS OK
- 24 HOUR DRMN & CONCIERGE
- WHITE GLOVE BLDG
- PREMIER ADDRESS
- 2% FLIP TAX PAID BY PURCHASER



EXCLUSIVE BROKER:  
**CAROL E. LEVY**

212.580.7270 [carol@carolelevy.com](mailto:carol@carolelevy.com)

\*ALL DIMENSIONS ARE APPROXIMATE

[WWW.CAROLELEVY.COM](http://WWW.CAROLELEVY.COM)